

## **DEFENDO: THE COMPLETE INTERNET SOLUTION**

- Internet access over one single ISP account
- Connect it to your corporate LAN and your ISP's dial up or private line – that's it!
- GUI: For beginners and pro's
- Remote support: Get it from your dealer via ISDN
- Demilitarized Zone (DMZ): Ready for your growing needs

## **DEFENDO: THE SECURITY SOLUTION**

- Reliable protection of your data – inside and outside of your corporate network
- Virus and hacker secure by a smart 'total security concept' including dynamic firewall, proxy, virus scan, intrusion detection system and VPN server

## **DEFENDO: THE INDIVIDUAL SOLUTION**

- DEFENDO small: Basic version for up to 20 users
- DEFENDO medium: Full version for up to 50 users
- DEFENDO large: 19" Rack mount full version for up to 250 users

## **DEFENDO: SURFING AND EMAILING FOR YOUR ENTIRE BUSINESS**

- Internet access via proxy – surf the net by entering username/password only
- Fully logfile and statistic controlled surfing
- Configurable surfing contingent for each user
- Black and white list content filtering for 'business related only' surfing
- Inactivity? Automatic cost saving by ISP disconnection
- Total email server functionality: For your entire business communication needs
- Virus check for each and every incoming and outgoing mail

## **DEFENDO: THE 'ALL IN ONE SOLUTION'**

- Proxy server: Fast and secure surfing
- Mail server: Managing unlimited addresses and domains
- www server: Intranet server platform
- FTP server: Providing downloads for partners
- Virusscanning server: For email and online downloads
- DHCP server: Automatic IP address assignment
- DNS server: Configurable DNS for URL name resolution.
- RAS server: Remote access for home offices and support
- VPN server: Wiretapping resistant subsidiary linkings via internet



## DEFENDO „SMALL“ (20 USERS)

### Configuration/User Management

- Browser based configuration and diagnostics
- Encrypted access to administration GUI
- Configuration backup via web browser or automatically over FTP, SCP or SMTP
- Encrypted remote support over internet or ISDN
- Update over internet
- Individually assignable passwords for different services (Internet access, email, RAS...) per user

### System Hardware

- Processor: Intel Celeron min. 800 MHz
- Network: 10/100 Mb/s Ethernet RJ 45
- ISDN: Passive ISDN card
- Operating System: Linux
- Hard Disc: 20 GB
- Soft power off ACPI
- Dimensions: 93W x 374D x 324H (mm)
- Memory: 128 MB

### ISP/LAN Connection

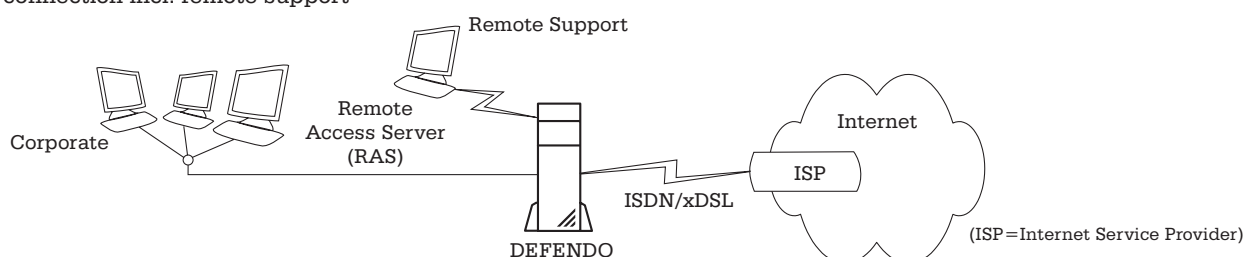
- ISDN dial up, 64 to 128 kb/s, EDSS1 or 1TR 6 sync PPP or HDLC
- ISDN leased line, 64 to 128 kb/s, sync PPP or HDLC
- ADSL, T-DSL, (PPP over Ethernet)
- Controlled PPP links
- Leased line over external router via PPP over Ethernet
- Various TCP/IP clients - Ethernet and Token Ring

### Mail Server

- Outgoing email over SMTP
- Incoming email over SMTP, ETRN, POP3 or IMAP4
- POP3 multidrop mailbox support
- Configurable maximum mail size
- Configurable mail gateway for existing mail servers (mail relay)
- Blocking of certain mail sources, mail aliasing
- All standard mail clients supported
- SMTP AUTH support for mail sender authentication
- Transparent TLS encrypted mail transmission between mail servers supporting this feature
- TLS encrypted access to POP3/IMAP4 accounts
- User restriction to local mail usage only
- email auto reply function

### Standart scenario:

For dial up ISP connection incl. remote support



### Firewall

- Fully configurable IP packet filter + NAT
- Versatile firewall architectures supported (e. g. DMZ)
- 4 trustlevels for each of DEFENDOs interfaces (LAN, internet, DMZ, RAS)

### Proxy-Cache

- Configurable caching of web sites
- Proxy for http, https, ftp, gopher and wais
- Password controlled web access via proxy
- Download statistics about the entire web traffic
- Download blocking of definable file extensions
- Adjustable time and capacity budgets for each surfer
- Temporal and permanent access restriction for definable URL's
- Group assignable website filter "Positive List" and "Negative List"

### RAS Options

- asyncPPP over external analog or ISDN modem
- ISDN dial up 64kb/s, syncPPP or HDLC
- RAS PC linking to LAN over proxyARP
- Remote LAN to LAN linking over TCP/IP routing

### Web/FTP Server

- Apache web server with CGI support
- Management over FTP or Windows share
- Anonymous FTP server for upload

### DNS/DHCP

- Caching DNS server
- Fully configurable DNS server for the LAN
- Primary and secondary DHCP server
- IP ranges configurable

## DEFENDO „MEDIUM“ (50 USERS)

Featured like DEFENDO small PLUS:

### Virus Scan\*

- Real time scanning of downloads
- Scanning of all incoming email attachments
- Automatic virus signature update
- Hosting virus signatures for the LAN
- Runs with both Kaspersky and McAfee scanners
- \*) McAfee Virusscanner must be purchased seperately

### VPN Server

- IPSEC/IKE compatible
- Tunnelling and transport mode
- AH with MD5/SHA authentication
- ESP with triple DES encryption
- RSA X.509 public key or shared secret

### Firewall

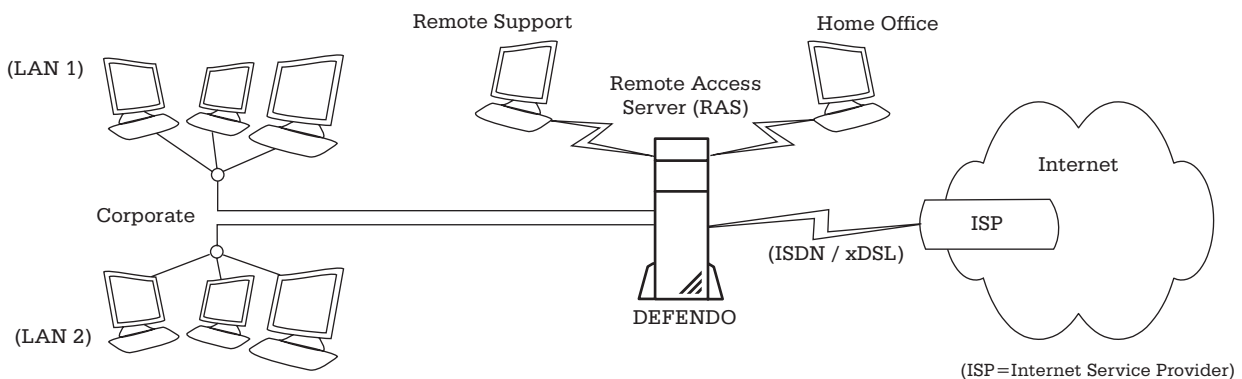
- Dynamic firewall defending and acting against hacker attacks
- Denial of Service (DoS) prevention
- Portscanning detection > unlinks hacker IP
- Fully configurable Stateful packet filter + NAT
- Versatile firewall architectures supported (e. g. DMZ)
- 4 trustlevels for each of DEFENDOs interfaces (LAN, internet, DMZ, RAS)
- Port forwarding from internet to LAN
- Intrusion detection to recognize infected systems and hostile contents
- Runs on each of the interfaces

### Proxy Cache

- Optional blocking of active html's

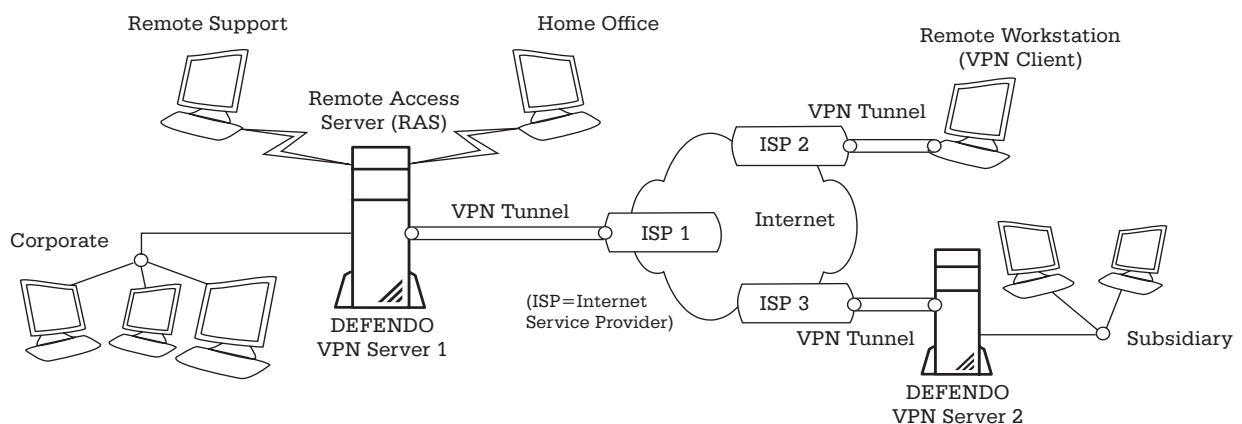
### Standart scenario:

For two LAN dial up ISP connection incl. remote support and home office linking



### VPN scenario:

For encrypted VPN private line ISP connection with subsidiary linking



## DEFENDO „LARGE“ (250 USERS)

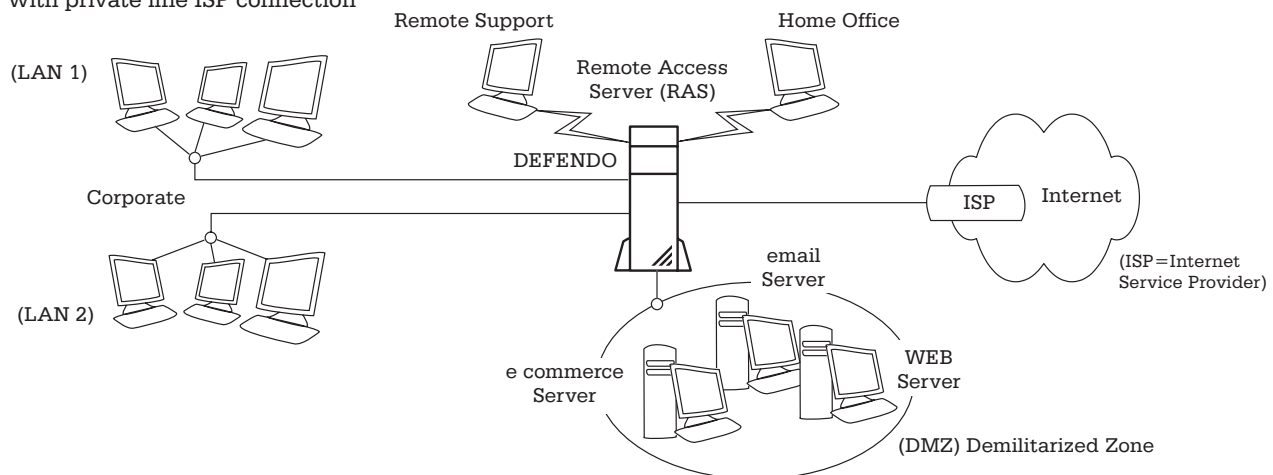
Featured like DEFENDO medium,  
but comes on high performance hardware:

### System Hardware

Processor: Intel Celeron min. 800 MHz  
 Network: 10/100 Mb/s Ethernet RJ 45  
 ISDN: Passive ISDN card  
 Operating System: Linux  
 Hard Disc: 20 GB  
 Soft power off ACPI  
 Dimensions: 19" ATX, 360D (mm)  
 Memory: 256 MB  
 Optional: Mirrored hard disc

### DMZ scenario:

For larger DMZ equipped LAN's  
with private line ISP connection



### VPN scenario:

For larger DMZ equipped LAN's with encrypted  
VPN private line ISP connection and subsidiary linking

